

Asset Management at the City of Vaughan

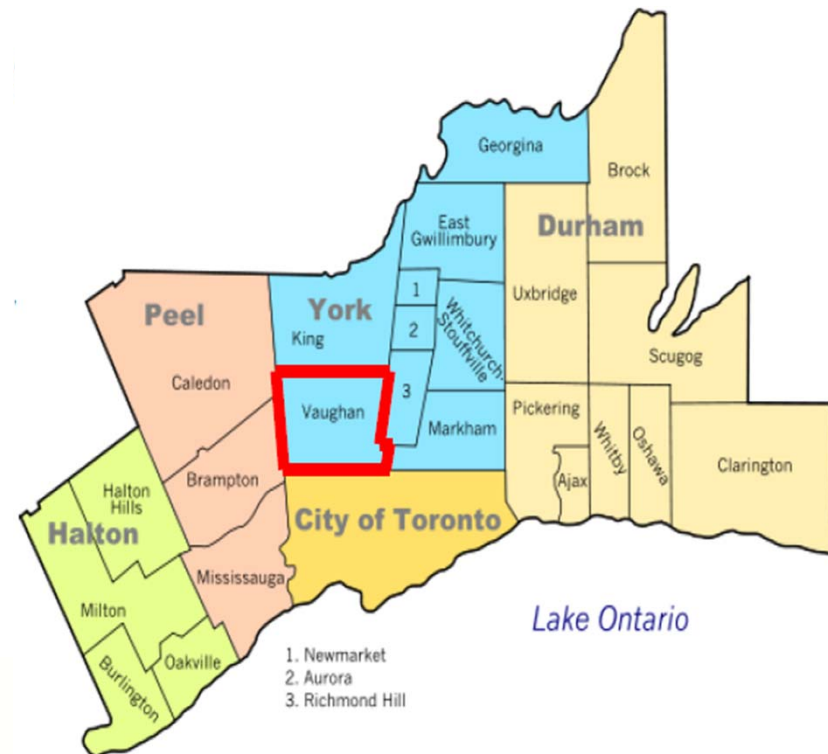
2017-04-25



The Vaughan Context

Vaughan is among
Top 10 fastest growing
municipalities in Canada.

- 2017 pop. **325,000**
- 2031 pop. **427,000** (forecast)



The Vaughan Context

- 830 km of roads
- 2640 km of mains (water, wastewater & stormwater)
- ~200 parks
- 96 buildings
- ~166 k street trees
- 415 vehicles

It would cost
\$5.5 Billion
to replace our assets.

That equates to
~\$17,000
per capita.



Our AM Journey

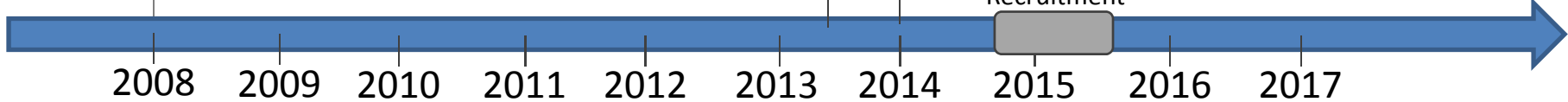
Strategic Plan - Vaughan Vision 2020



AM Gap Assessment
AM Strategy & Roadmap
AM Plan 1.0

Council Approval of
Corp AM Office
& Capital Budget

Corp AM
Recruitment

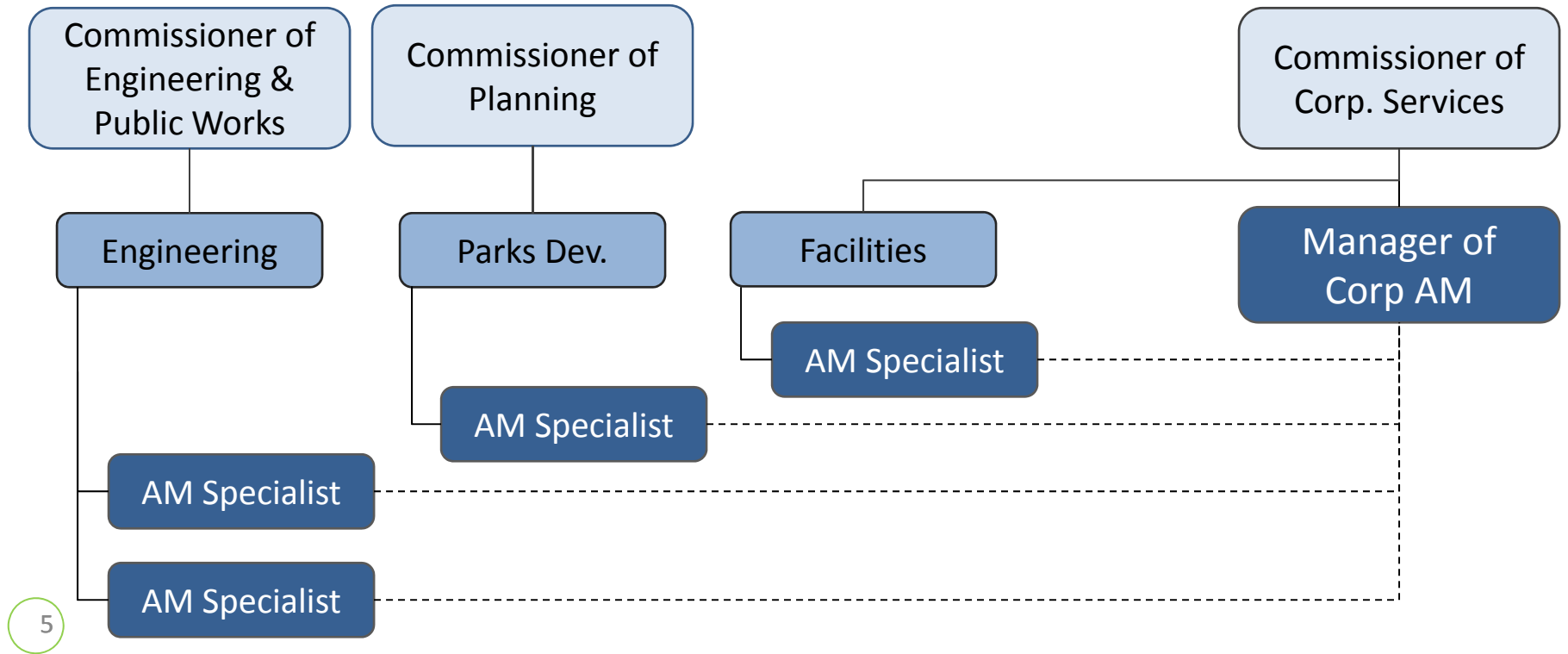


Strategy & Roadmap focused on need for:

- Asset Data Collection
- Work Order System
- AM Planning System

The Corporate AM Department

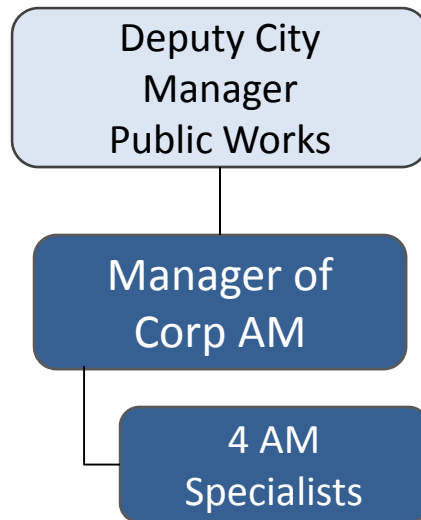
Original Interim Structure



5

The Corporate AM Department

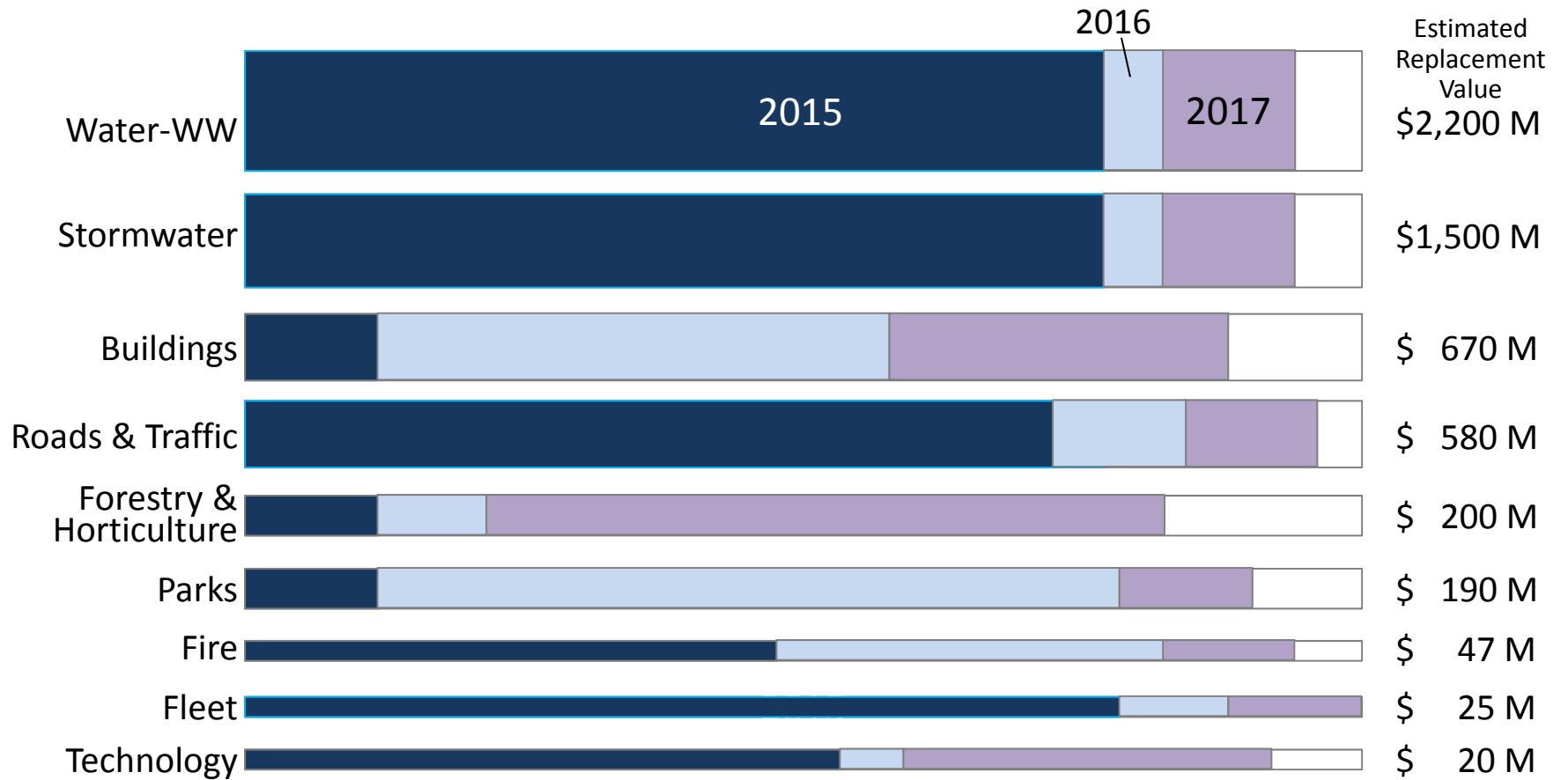
Current Structure



In late 2015, as part of a corporate restructuring, Corp AM was consolidated into the Public Works Portfolio, but maintains a Corporate scope.

AM Specialists retain their relationships with original hiring Departments, but now work on all asset areas.

Asset Data



AM Systems

Work Orders

- PW Fleet
 - JDE Work Orders tracked to vehicles & equipment
- Roads, Parks, Forestry, Env Services, Buildings
 - JDE Cases, not tracked to individual assets
- Fire Vehicles
 - Firehouse & Excel
- Calls tracked using JDE Case Tracking

Current project:

All asset work managed using JDE Work Orders.

JDE WO to be map-enabled, asset data synchronized with GIS.



AM Systems

AM Planning

- Roads & Pipes
 - DTIMS
- Excel
 - All others

Current project:

Exploring AM Planning solution for all asset types.

Mapping & Visualization

- Storage of Spatial Data
 - ESRI
- Visualization & Inspection Forms
 - GeoCortex

Current project:

Integration of systems & synchronization of data sets.

For more information

Elaine Chang
Manager of Corporate Asset Management
City of Vaughan

elaine.chang@vaughan.ca

(905) 832-8585 x 8303

